

Men who have sex with men (MSM) report high use of club drugs which is associated with high risk sexual behaviour

Thomas Kurka BSc¹, Suneeta Soni FRCP^{1,2} & Daniel Richardson FRCP^{1,2}

1. Brighton & Sussex Medical School, 2. Brighton & Sussex University NHS Trust

“There has been a change in gay culture,
social and sexual networks”

(The Guardian, 9 Apr 2014)



Background

- ❑ **US data:** LGBT are more vulnerable to ... substance misuse than heterosexuals and it is associated with high risk sexual behaviour (Warner *et al*, 2004; Clatts *et al*, 2005)
- ❑ **UK data:** Club drugs are frequently used by men who have sex with men (MSM) ...more common in HIV-positive MSM (Measham *et al*, 2011; Kirby, 2013)
- ❑ **ASTRA:** Cross-sectional study of 2,248 HIV-positive MSM - polydrug use associated with condomless sex and poor adherence to ARVs (Daskalopoulou *et al*, 2014)
- ❑ Brighton & Hove has a large LGBT population, estimated at 40,000 people (21% of the adult population) (Brighton& Hove City Council, 2009)

Aims

1. To quantify club drug use in MSM locally
2. To examine differences by HIV status
3. To identify any association between club drug use and sexual behaviour

METHODS

- Patient survey
- January – March 2014
- 4 venues:
 - 2 secondary care STI clinics
 - 1 NGO – Terrence Higgins Trust
 - 1 primary care walk-in clinic
- Inclusion criteria: male, ≥ 18 years of age, identified as gay/bisexual
- Club drugs considered in this study: cocaine, ecstasy, MDMA, ketamine, GBL/GHB, crystal meth
- IBM SPSS Statistics 21 used for data analysis

The Lawson Unit
LEADING HIV CARE FOR BRIGHTON

TERRENCE HIGGINS TRUST

care

Brighton and Sussex NHS Foundation Trust

Claude Nicol Centre
LEADING SEXUAL HEALTH CARE FOR BRIGHTON

Patient satisfaction survey of Men who have Sex with Men (MSM) attending Brighton's sexual health clinic

Please take a few minutes to fill out this survey on the timeliness and quality of the service you received today. Claude Nicol Centre, Lawson Unit, Brighton Station Health Centre and THT welcome your feedback and your answers will be kept **confidential**.
Thank you for your participation.

General Patient Information

What is your age?

How would you describe your sexuality?

☐ Gay ☐ Bisexual ☐ Other

If OTHER, please specify

Have you been to a sexual health clinic before?

☐ YES ☐ NO

If YES, where?

Have you been diagnosed with an STI (Sexually Transmitted Infection) in the past 6 months?

☐ YES ☐ NO

Which?

What is your HIV status?

☐ Positive ☐ Negative ☐ Don't know ☐ Never tested

Have you had unprotected anal sex in the past 6 months?

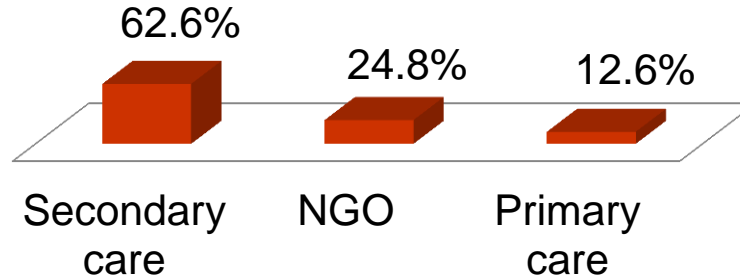
☐ YES ☐ NO

1

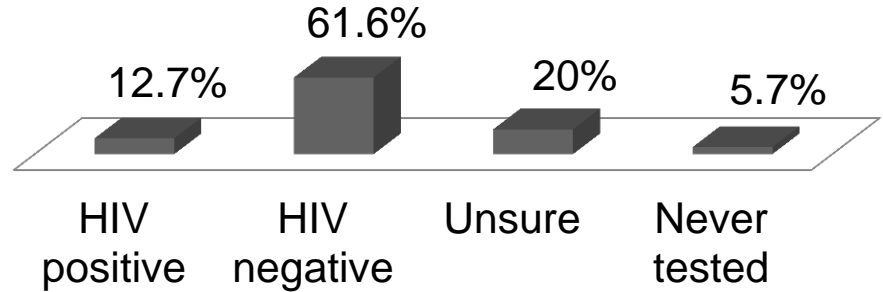
RESULTS

- N=246
- Median age 34

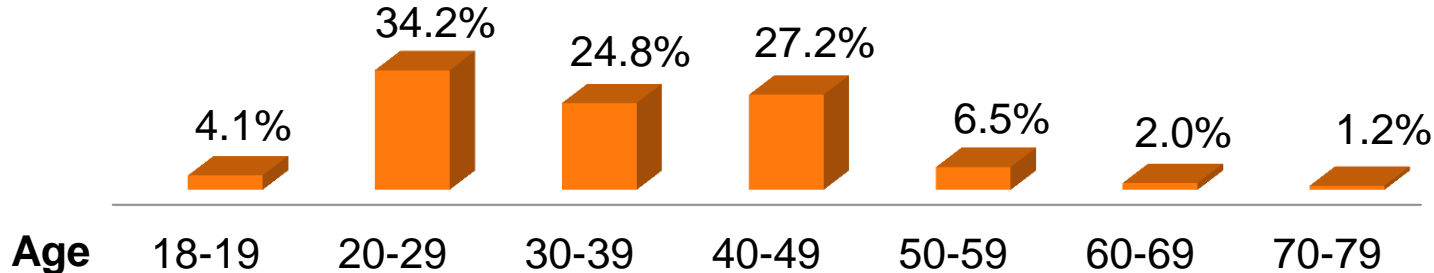
Surveys completed



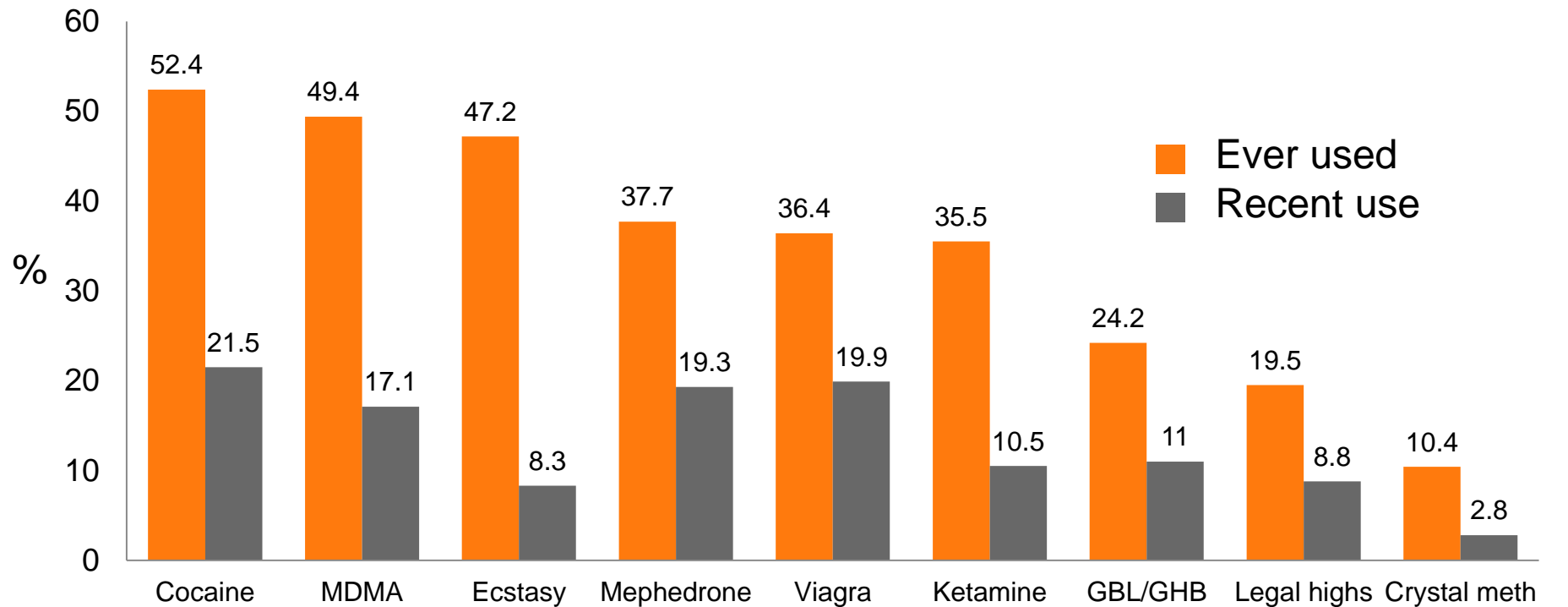
HIV status



Age distribution

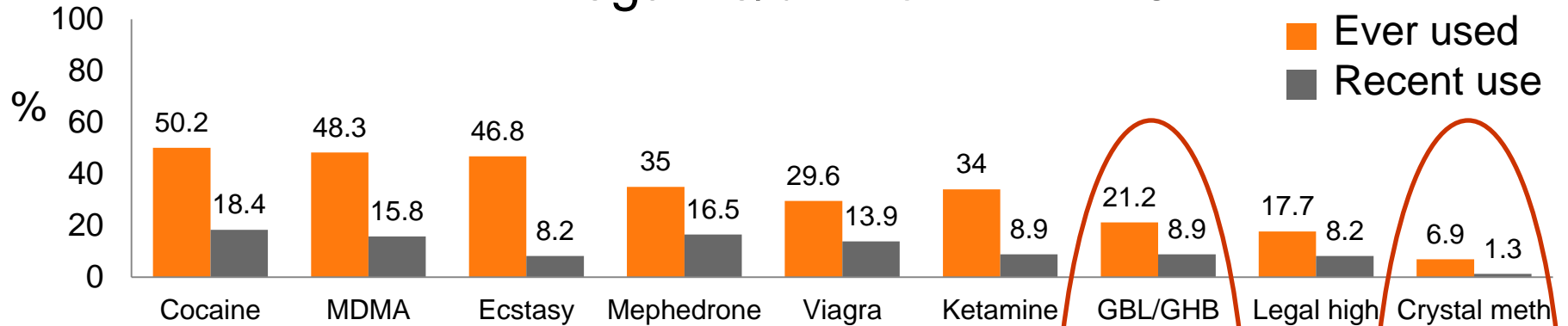


Club drug use in MSM

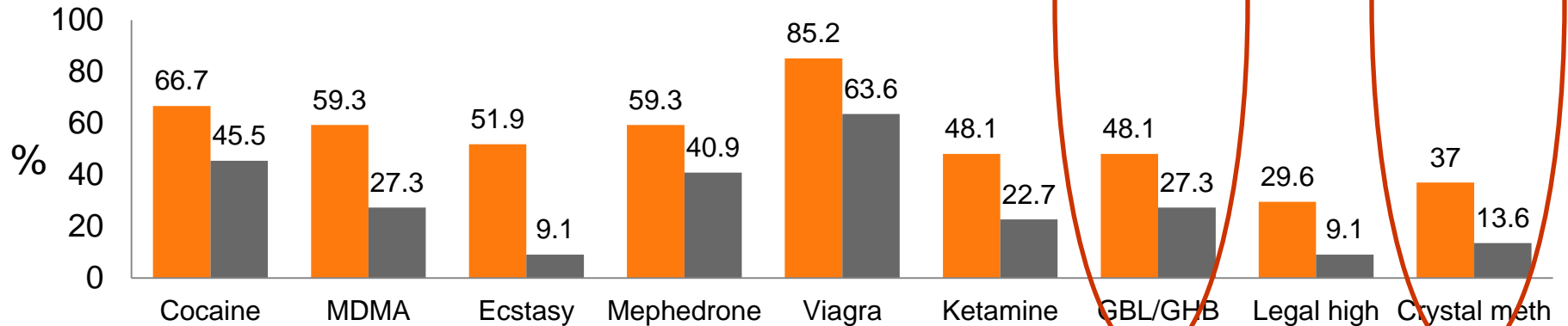


Recent use = used club drugs in the past month

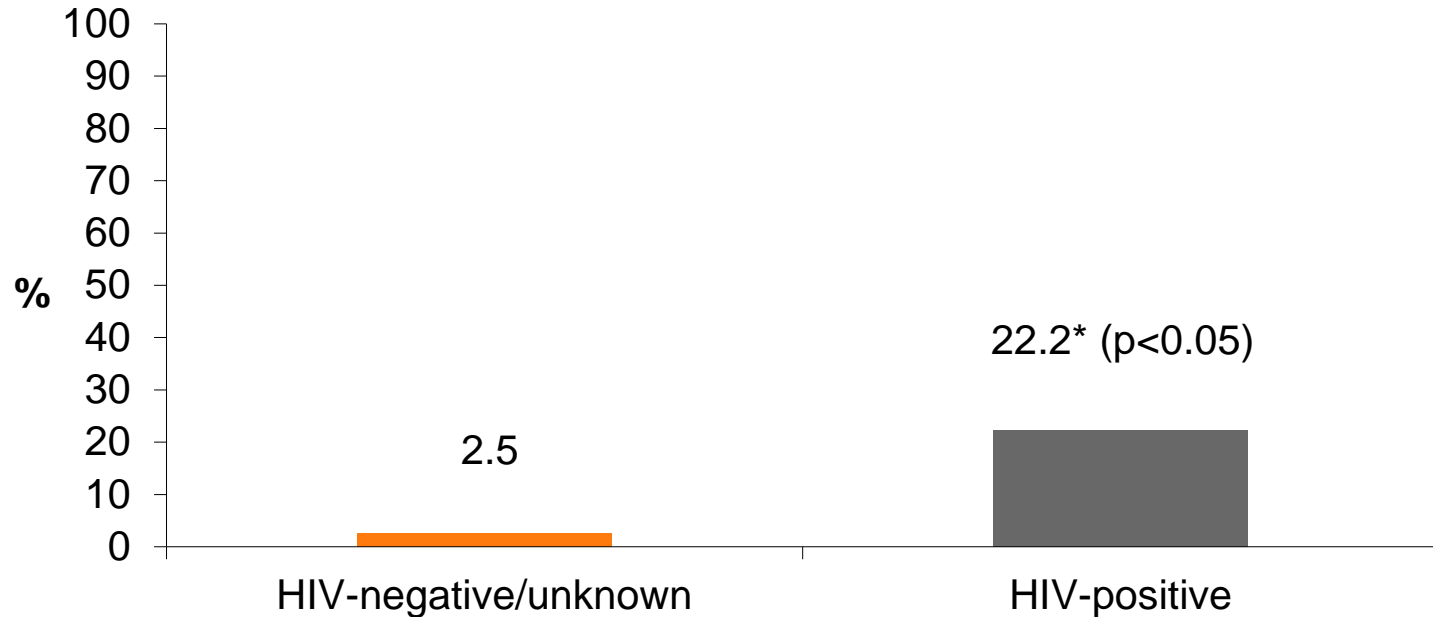
HIV-negative/unknown N=215



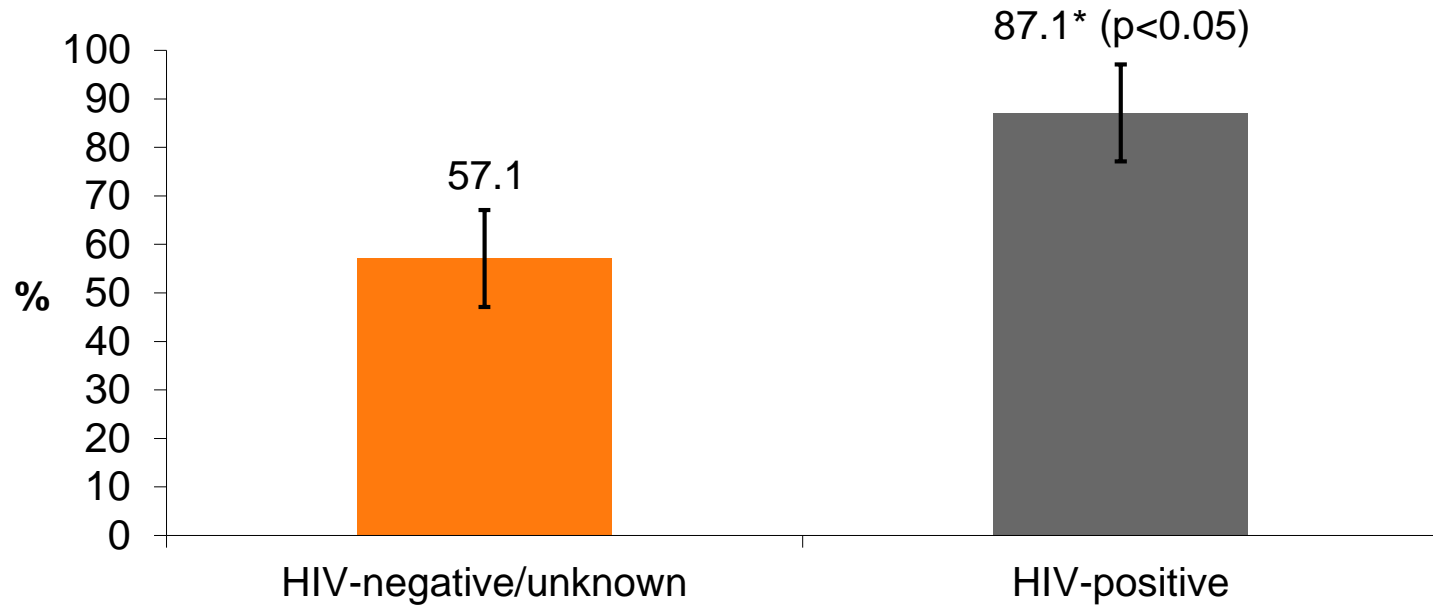
HIV-positive N=31



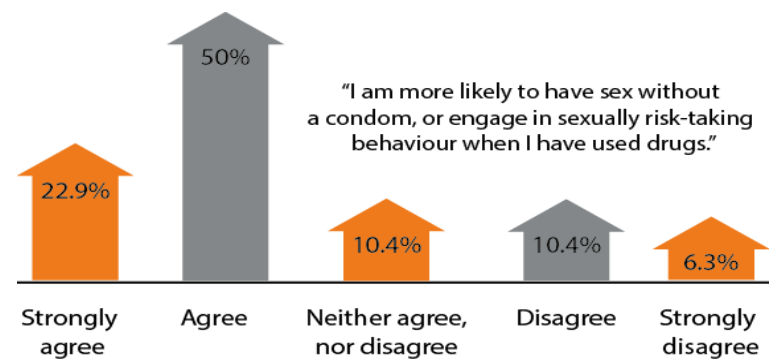
IVDU ('slamming') in MSM using club drugs by HIV status



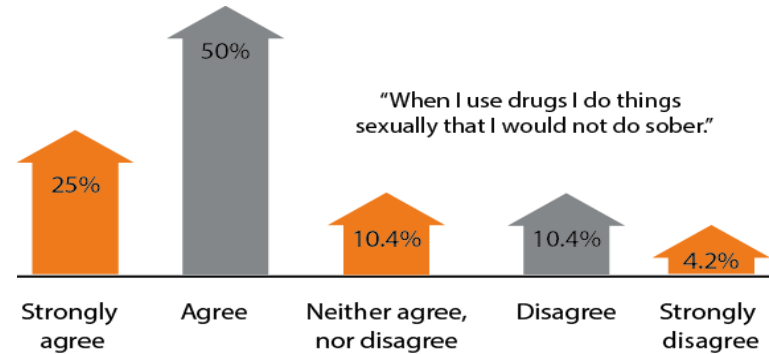
UAI (in last 6 months) in MSM using club drugs by HIV status



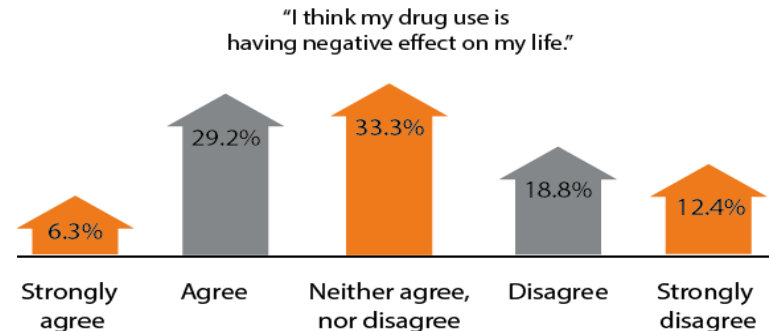
❑ 72.9% are less likely to use condoms when on drugs



❑ 75% are more likely to do things sexually that they would not do sober

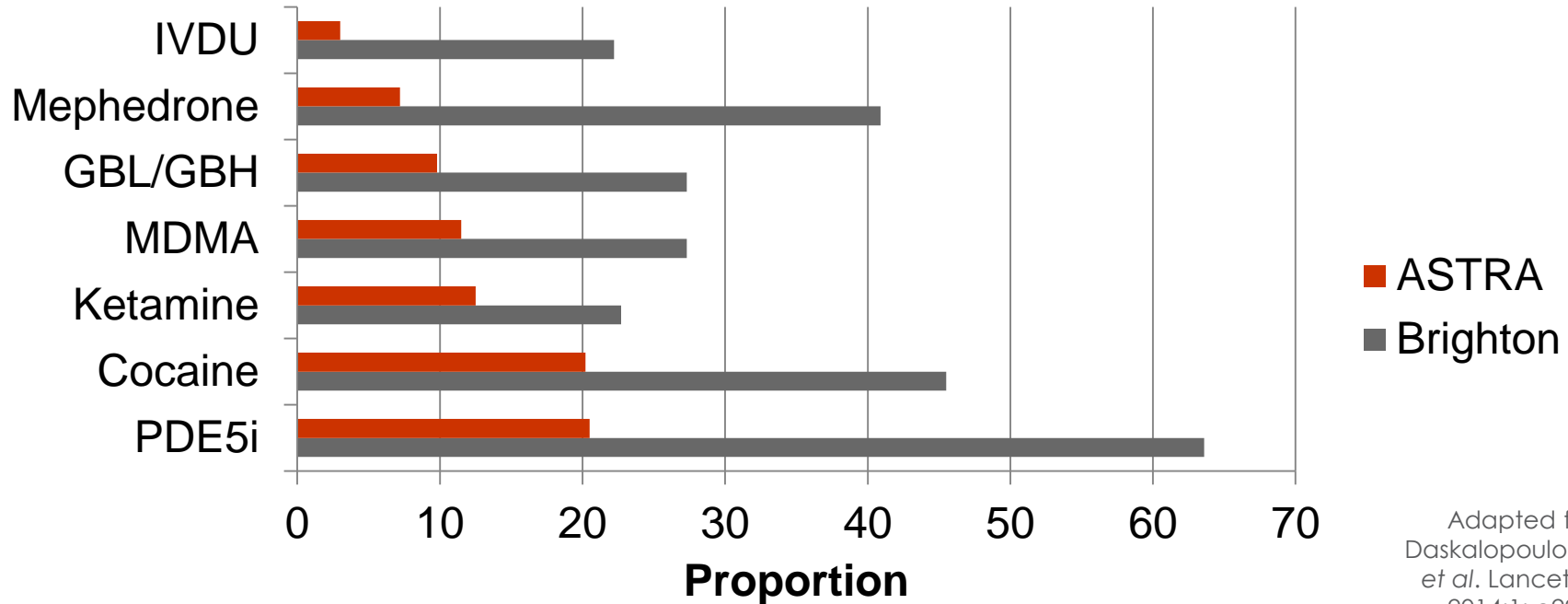


❑ 35.5% believe that their drug use has negative effect on their life



Club drug use in HIV-positive MSM

ASTRA study vs Brighton



Adapted from
Daskalopoulou, M,
et al. Lancet HIV
2014;1: e22–31

NB: ASTRA – used in the previous 3 months; Brighton – used in the previous 1 month

Take home messages

- ❑ Club drug use among MSM is worryingly high locally and these MSM are more likely to engage in unprotected anal intercourse
- ❑ The highest prevalence of club drug use, intra-venous drug use and unprotected anal intercourse is among HIV-positive MSM
- ❑ Sexual health services and drug services should work in partnership

Acknowledgments

Teams and patients at:

- Claude Nicol Centre, RSCH
- Lawson Unit, RSCH
- Terrence Higgins Trust, Brighton
- Brighton Station Health Centre

